

## Growth performance of acropora formosa in natural reefs and coral nurseries for reef restoration

Xin, Loke Hai; Adzis, Kee Alfian Abdul; Hyde, Julian; Cob, Zaidi Che

*Published in:*  
AACL Bioflux

Published: 30/10/2016

*Document Version:*  
Publisher's PDF, also known as Version of record

[Link to publication](#)

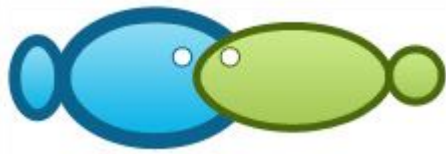
*Citation for published version (APA):*

Xin, L. H., Adzis, K. A. A., Hyde, J., & Cob, Z. C. (2016). Growth performance of acropora formosa in natural reefs and coral nurseries for reef restoration. *AACL Bioflux*, 9(5), 1090-1100. Article A018.  
<http://www.bioflux.com.ro/docs/2016.1090-1100.pdf>

### General rights

Copyright and intellectual property rights for the publications made accessible in HKBU Scholars are retained by the authors and/or other copyright owners. In addition to the restrictions prescribed by the Copyright Ordinance of Hong Kong, all users and readers must also observe the following terms of use:

- Users may download and print one copy of any publication from HKBU Scholars for the purpose of private study or research
- Users cannot further distribute the material or use it for any profit-making activity or commercial gain
- To share publications in HKBU Scholars with others, users are welcome to freely distribute the permanent publication URLs



# Growth performance of *Acropora formosa* in natural reefs and coral nurseries for reef restoration

<sup>1</sup>Loke H. Xin, <sup>1</sup>Kee A. A. Adzis, <sup>2</sup>Julian Hyde, <sup>1</sup>Zaidi C. Cob

<sup>1</sup> School of Environmental and Natural Resource Sciences, Faculty of Science and Technology, National University of Malaysia, 43600 Bangi, Selangor, Malaysia; <sup>2</sup> Reef Check Malaysia, Suite 5.19-5.22, Box 606, Wisma Central, Jalan Ampang, 50450 Kuala Lumpur, Malaysia. Corresponding author: Z. C. Cob, [zdcc@ukm.edu.my](mailto:zdcc@ukm.edu.my)

**Abstract.** Coral reefs are highly valuable ecosystems and play crucial roles in marine ecosystem dynamics by providing food and shelters for many organisms. Unfortunately, coral reefs around the globe are declining, thus apart from marine protected areas, active conservation and restoration efforts are extremely crucial. In this study *Acropora formosa* nubbins were transplanted and their performance were monitored, with the main aim to evaluate their survivals and growth in comparison with natural reef. The extension growth, proto-branch generation, mortality and survivals were assessed for one year in Tioman Island, Malaysia. The *A. formosa* growth rates ranged from  $0.59 \pm 0.07$  to  $1.20 \pm 0.03$  cm mth<sup>-1</sup> in the nursery and from  $0.55 \pm 0.13$  to  $0.72 \pm 0.11$  cm mth<sup>-1</sup> in the natural reef. The transplanted corals exhibit higher growth rates particularly during early period of transplant, and moreover have significantly higher proto-branch generation rates compared with the natural colony. However, their survivals were significantly low, mostly due to predation by fish and other corallivores. Seasonal variations in coral growth were observed, with faster rates during the inter-monsoon period (March-April and October-November). This study for the first time, documented the success of *A. formosa* transplantation and its application in coral nurseries in Malaysian waters. Coral transplantation is highly beneficial for active coral reef restoration and conservation. Nevertheless, continuous long term, systematic monitoring are needed in order to have greater understanding of the *A. formosa* growth and dynamics in the tropical coral reef ecosystems.

**Key Words:** *Acropora formosa*, coral growth rates, coral nursery, reef restoration, coral transplant.

**Introduction.** Coral reefs are highly valuable ecosystems, and are well known for the variety of marine flora and fauna within. These reefs play crucial roles in marine ecology and coastline protection, and are also vital in providing food and other resources to coastal communities (Hoegh-Guldberg et al 2007; Burke et al 2011; Osinga et al 2011). Unfortunately, coral reefs around the globe have been declining rapidly. This degradation resulted from a combination of natural and anthropogenic factors, such as climate change (Baker et al 2008; Munday et al 2008; Ateweberhan et al 2013), pollution (Burke et al 2011; Feary et al 2012; Riegl & Purkis 2012), sedimentation (Wolanski et al 2004; Fabricius et al 2005; Wooldridge 2009), destructive fishing (Jackson et al 2001; Chabanet et al 2005; Fox et al 2005; Hughes et al 2007; Caras & Pasternak 2009) and coral mining (Caras & Pasternak 2009).

The decline in reef health has driven many studies to determine the effects of the natural and anthropogenic factors mentioned above. Research and publications on coral reefs has since dramatically increased, and with that more awareness are coming from the public as well as legislators. As a result, legislations and Marine Protected Areas (MPAs) have been introduced in some countries (Rinkevich 2005). However the annual loss of coral reefs in the Indo-Pacific still increased from 1% to 2% between 1997 and 2003 (Rinkevich 2005, 2008). Thus, the concept of active conservation and restoration was introduced in order to replenish and restore degraded reefs more quickly and more effectively. Example method is coral transplantation where corals were collected from a healthy donor reef and cultivated in 'nurseries' similar to the method in silviculture

(Rinkevich 2005, 2008). The cultivated corals were then transplanted back onto the degraded reef in order to restore their ecological properties (Yeemin et al 2006; Garrison & Ward 2008; Rinkevich 2008; Chou et al 2009; Forrester et al 2011; Ammar et al 2013). Therefore, good understanding of coral growth, development and interactions with their environment is crucial in order to achieve effective reef restoration (Rinkevich 2005, 2008; Forrester et al 2011; Osinga et al 2011; Ammar et al 2013).

Recently, a coral reef transplantation programme has been launched in Tioman Island, Malaysia, utilizing *Acropora formosa* from the nearby Renggis Island (RCM 2012). In the present study the transplanted corals were assessed and monitored, with the main aim to evaluate their survivals and growth performances, in comparison with the natural colony at the donor site. Since this was the pioneer coral transplantation program in Malaysia, results from this study are therefore very important for future program in Malaysian coastal waters, as well as in other parts of the region.

## Material and Method

**Description of the study sites.** This study was conducted at Tioman Island, Malaysia, about 30 nautical miles from the mainland. The Tioman Island archipelago comprises of Tioman, Tulai and Renggis and were gazetted as a Marine Park in 1994 under the Malaysian Fisheries Act 1985 (Amended 1993). The island can be easily accessed by flight from Kuala Lumpur and Singapore, apart from many boat services from the mainland. The island is highly influenced by the Northeast Monsoon during November to February, which brings heavy rainfall and storms (Wong 1993). Due to the increasing environmental pressures, climate change and deteriorating reef condition, a coral reef rehabilitation program was initiated by Reef Check Malaysia (RCM), with the installation of a coral nursery at Tekek in June 2011 (RCM 2012). Small nubbins of *A. formosa* were collected from a nearby donor reef at Renggis Island (Figure 1).

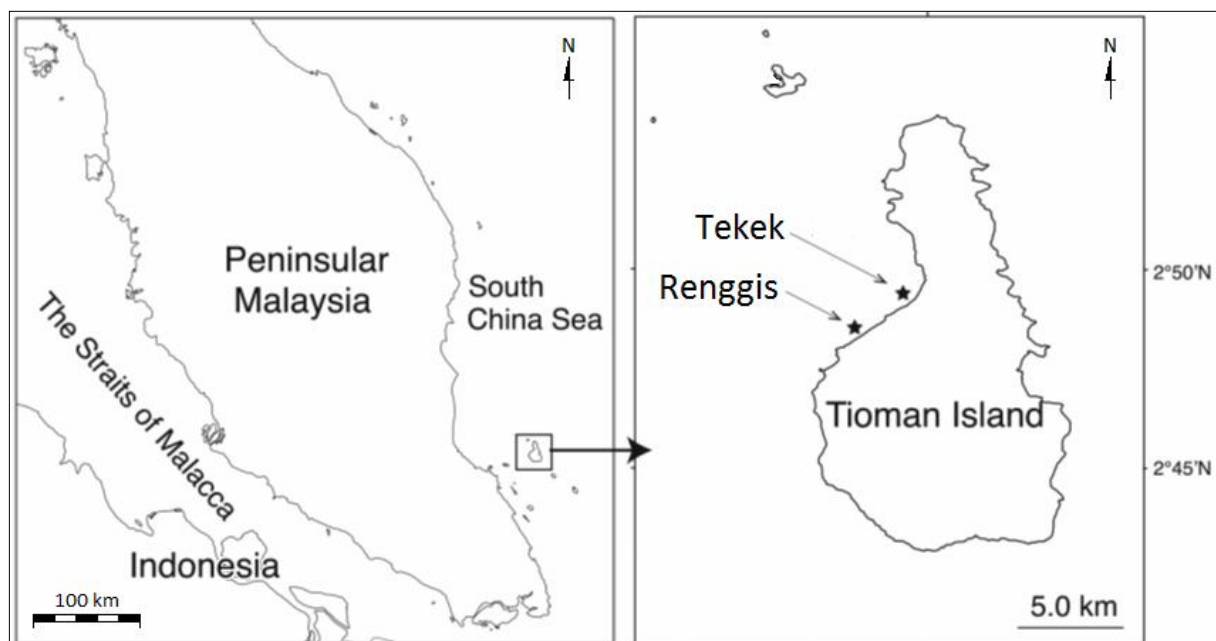


Figure 1. The location of Renggis reef and the coral nursery at Tekek, Tioman Island, Malaysia.

**Donor reef and nursery setup.** Four sampling sites at the donor reef in Renggis Island were randomly selected and marked by underwater buoyant markers. The *A. formosa* colony branches were then randomly selected and tagged using cable ties with numbered plastic tags (Figure 2). The distance between the cable tie and the tip of coral branch was maintained at approximately 3 cm (Charuchinda & Hylleberg 1984). A total of 92 coral branches at the four sites were tagged and their survivals, growth and proto-branch generations were monitored throughout this study.

In the coral transplant experiment, coral nubbins of 5-10 cm lengths were collected from Renggis Island reef by using pliers (Soong & Chen 2003). The nubbins were maintained submerged in a zip-lock plastic bag filled with sea water, and were transferred to the nursery site at Tekek within an hour. The nubbins were transplanted onto specially made substrates, comprised of rectangular frames made from 15 mm diameter PVC pipes. The PVC frame was approximately 80 cm x 70 cm, with four parallel pipes across, and the whole structure was elevated to about 35 cm from the bottom. The nubbins were tied vertically to the frames using plastic cable ties (Figure 3). There were 60 nursery frames installed at the Tekek nursery site, with a total of 1680 nubbins successfully transplanted. In this study the nubbins were randomly selected for observations.



Figure 2. The *Acropora formosa* colony at Renggis Island, Tioman Island, Malaysia. The coral branches were randomly selected and tagged for monitoring purposes.



Figure 3. The PVC frame used as substrate for the coral transplant at Tekek, Tioman Island, Malaysia.

**Coral monitoring and observations.** During the monitoring period, environmental parameters such as water depth, temperature, photosynthetic active radiation (PAR), visibility and secchi depth were taken at each site during each visit. Apart from that, continuous water temperature profiles were recorded using the Onset HOBO Pendant Temperature Data Logger (Onset Computer Corporation 2012). Four aspects of *A. formosa* growth were monitored i.e. extension growth, proto-branch generation, predation rates and survival rates, which were recorded every two months. The extension growths were measured using a flexible measuring tape, from the area marked by the cable tie up to the tip of the axial polyp (Charuchinda & Hylleberg 1984; Okubo et al 2005). Only the primary axial branch were measured, while the corals and nubbins with their tips missing due to predation or with bite marks were excluded. The protobranch generations were monitored by recording every secondary white-tipped axial branch that emerged from the area between the cable tie and the branch tip. The predation rates were defined as removal of the intact tip of coral branch or nubbins by corallivores (Jayewardene et al 2009), and were recorded as portion (lengths) of coral removed by corallivory fish. And finally the survival rates were determined by counting the number of dead nubbins, which defined as corals without any signed of living polyps present.

**Statistical analysis.** All data were tested for assumptions of normality and homoscedasticity by the Bartlett's test and were arcsine-transformed when required. Comparisons between the nursery site at Tekek and natural reef at Renggis were conducted using t-test. Variations between sampling months were compared using one-way ANOVA, followed by Tukey's post hoc test. Significance of differences was defined at  $p < 0.05$ . Statistical analyses were performed using MINITAB® software.

**Results.** The sites at natural reef of Renggis Island were significantly deeper compared with the transplanted corals at the nursery site in Tekek (Table 1,  $p < 0.05$ ), with mean water depth of  $7.20 \pm 0.07$  m and  $5.81 \pm 0.04$  m respectively. The seawater temperature at both sites were relatively similar ( $p > 0.05$ ), with annual range between  $27^\circ\text{C}$  and  $31^\circ\text{C}$  (Figure 4), and mean daily temperature of  $28.89 \pm 0.70^\circ\text{C}$ . Relatively higher temperatures were recorded during March-April and October-November period. The PAR values were significantly different between the two sites ( $p < 0.05$ ), which ranged from 70 to  $165 \mu\text{mol m}^{-2} \text{s}^{-1}$  in the nursery site and from 30 to  $175 \mu\text{mol m}^{-2} \text{s}^{-1}$  in the natural reef. The different in PAR values was probably due to the different depth of the two sites, where there were significant negative correlation between PAR and water depth at both sites (Pearson correlations,  $p < 0.05$ ). There was no significant different in secchi depth reading and underwater visibility between the two sites ( $p > 0.05$ ), which indicated that the water quality (turbidity) and degree of transparency was quite similar between them.

Table 1

The environmental parameters (mean±standard error) at Renggis reef and coral nursery at Tekek, measured at noon between 13:00 to 14:00 h

	<i>Nursery site</i>	<i>Natural reef</i>	<i>Statistics</i>
Depth (m)	$5.81 \pm 0.04$	$7.20 \pm 0.07$	t-test: -17.90, $p < 0.05$ , df = 411
Temperature ( $^\circ\text{C}$ )	$28.24 \pm 0.06$	$28.22 \pm 0.06$	t-test: 0.19, $p > 0.05$ , df = 516
PAR ( $\mu\text{mol m}^{-2} \text{s}^{-1}$ )	$114.00 \pm 2.80$	$95.10 \pm 2.70$	t-test: 4.82, $p < 0.05$ , df = 275
Visibility (m)	$9.17 \pm 1.60$	$9.33 \pm 1.50$	t-test: 0.07, $p > 0.05$ , df = 9
Secchi reading (m)	$5.12 \pm 0.09$	$5.50 \pm 0.16$	t-test: 2.11, $p > 0.05$ , df = 6

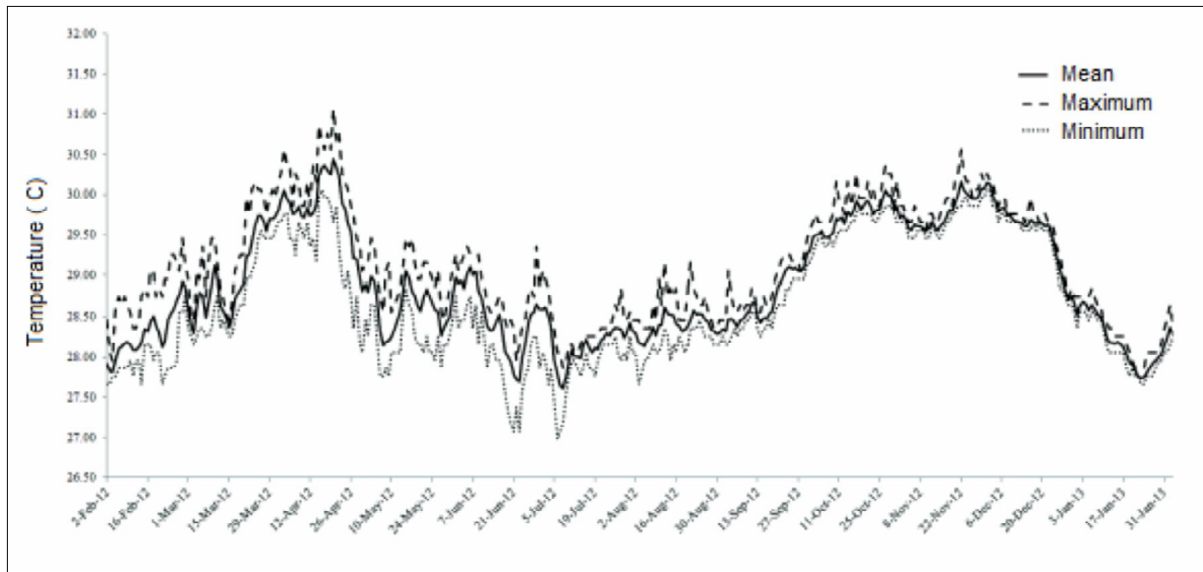


Figure 4. Daily water temperatures recorded throughout the study period.

**Extension growth and protobranch generations.** The mean extension growth of *A. formosa* nubbins at coral nursery in Tekek and natural reef in Renggis is presented in Figure 5. The growth rates ranged from  $0.59 \pm 0.07$  to  $1.20 \pm 0.03$  cm mth<sup>-1</sup> in Tekek nursery, and from  $0.55 \pm 0.13$  to  $0.72 \pm 0.11$  cm mth<sup>-1</sup> in Renggis reef. The growth rates at the nursery were generally higher compared with the natural reef. The difference appeared probably due to higher PAR values in nursery areas, which was located at much shallower waters. However, they were only significantly different during the first four months of the study ( $p < 0.05$ ), with highest growth rate recorded, at  $1.44 \pm 0.12$  cm mth<sup>-1</sup>. No significant difference was detected for the following months ( $p > 0.05$ ). Throughout the monitoring period, the variations in growth rates appeared relatively similar between the nursery and the natural reefs. There was also quite similar pattern of variations between growth rates and mean daily temperature throughout the study (Figure 5). However, low correlations were detected between the temperature and the growth rates in Tekek (Pearson correlation = 0.14,  $p > 0.05$ ), and Renggis (Pearson correlation = 0.67,  $p > 0.05$ ). The proto-branch generation rates also showed higher values in the nursery site compared with the natural colony throughout the study (Figure 6). There were significantly higher proto-branch recorded in the nursery during the earlier phase (March to July 2012) and final phase of the monitoring (January 2013) ( $p < 0.05$ ). Again, this might be due to higher PAR values recorded in Tekek nursery area.

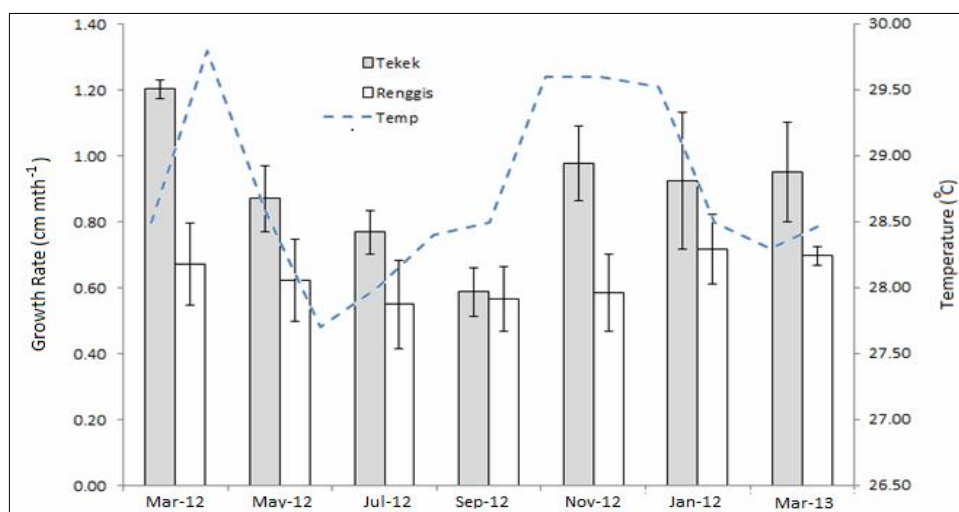


Figure 5. Growth rates (extension growth) of *Acropora formosa* and variations in seawater temperature from March 2012 to March 2013.

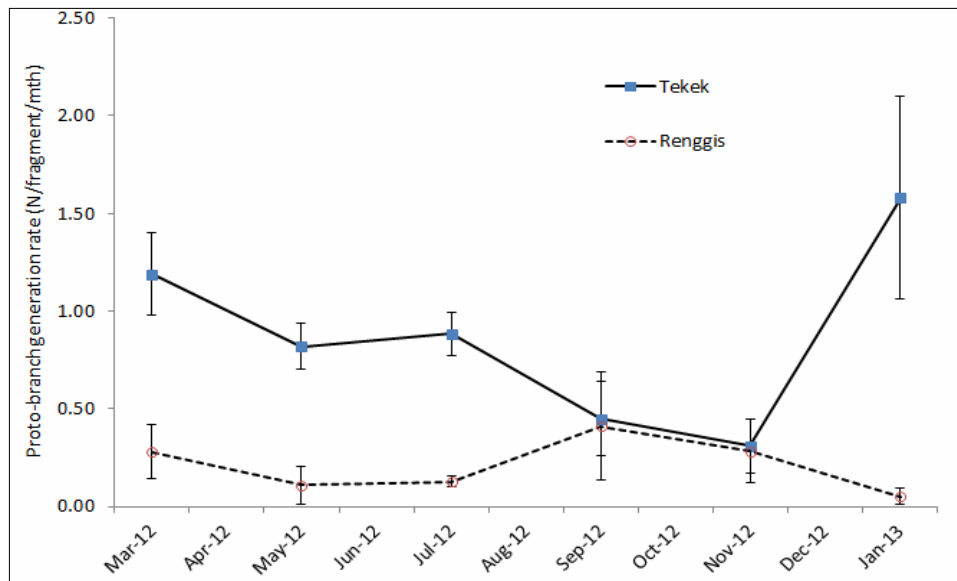


Figure 6. *Acropora formosa* proto-branch generation rates recorded throughout the study period at Tioman island, Malaysia.

**Mortality, predation rates and survivals.** The survival rates of *A. formosa* in the natural reef was significantly higher than the coral nurseries ( $p < 0.05$ ) (Figure 7). All tagged coral branches at the natural reef were survived and remained healthy throughout the monitoring period. The transplanted coral nubbins were also performing well and healthy during the first six months, with mean survival rates of  $94.64 \pm 1.03\%$ . There was no significant difference in survivals between both sites during this period ( $p > 0.05$ ). However, the survival rate in the nursery site decreased sharply between July to September 2012 ( $p < 0.05$ ), before gradually become more constant in the following months ( $p > 0.05$ ).

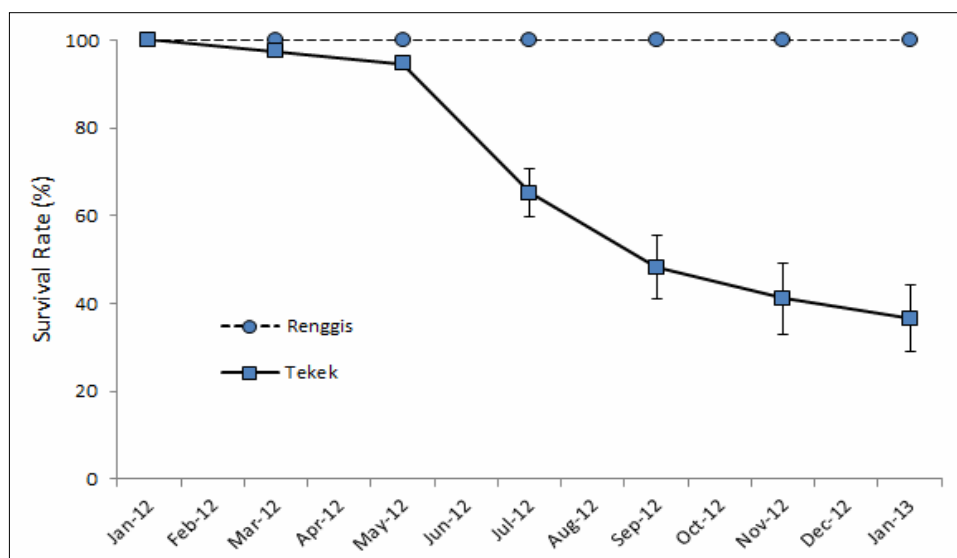


Figure 7. The survival rates of *Acropora formosa* nubbins at Tekek nursery and natural reef at Renggis, Tioman Island, Malaysia.

The higher mortalities recorded at the nursery site were mainly due to predation by fish and other corallivores. Majority of the dead corals are either totally gone or partly broken with bite marks. There were high variations in predation rates at the nursery site, while in the natural reef the rates were more constant (Figure 8). The difference probably due to the low density of corals in the nursery, thus they were more exposed to predators

compared with the dense and complex structure of the natural reef. Although there was no significant difference in predation rates between the nursery and the natural reef during the first two months ( $p > 0.05$ ), the predation rates in the nursery increased sharply after that ( $p < 0.05$ ). The predation rates were then gradually decreased to a level similar to the natural reef at the end of experiment ( $p > 0.05$ ).

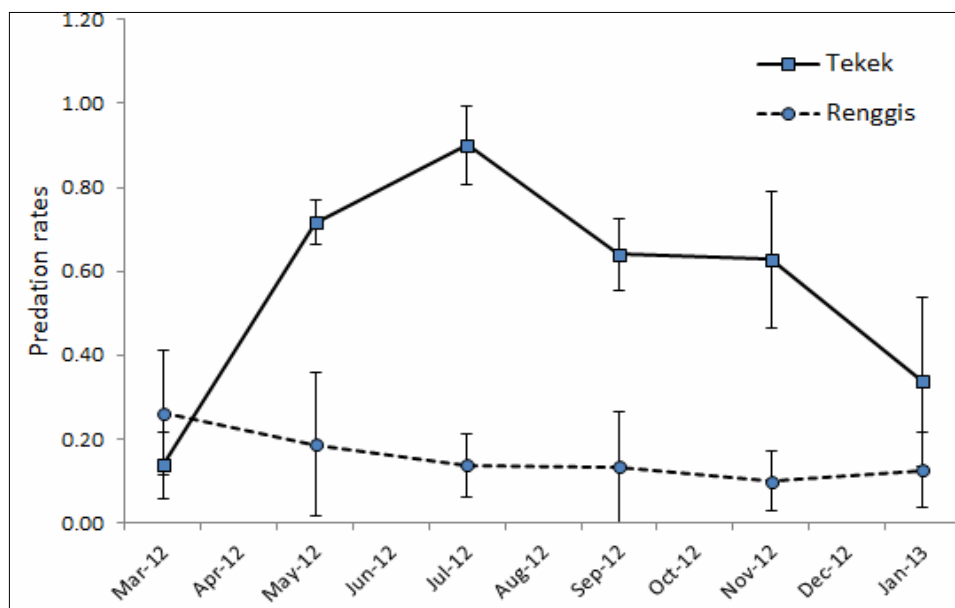


Figure 8. The predation rates of *Acropora formosa* recorded throughout the study period at Tekek nursery and Renggis reef, Tioman Island, Malaysia.

**Discussion.** The *A. formosa* growth rates recorded from the natural reef at Renggis was within the values reported from other studies (Table 2), indicating a healthy reef condition. The nursery site, however recorded maximum growth rates of  $1.45 \pm 0.09 \text{ cm mth}^{-1}$ , which was greater compared with the natural reefs in Renggis (this study), as well as other studies (Charuchinda & Hylleberg 1984; Gladfelter et al 1978; Harriot 1998; Crabbe & Smith 2002; Lirman et al 2010). *A. formosa* at both the nursery and natural reefs showed higher growth rates in March and November 2012, when the mean daily water temperature was also high. According to Hubbard (1997), the optimum range of water temperature for corals to grow is around 26-28°C. However, there was low correlation between temperature and growth rates.

Table 2

The *Acropora* sp. growth rates reported in other studies

Location	Species	Growth rates ( $\text{cm mth}^{-1}$ )	Source
Tekek, Tioman, Malaysia	<i>Acropora formosa</i>	$0.68 \pm 0.13$ to $1.45 \pm 0.09$	Present study
Renggis, Tioman, Malaysia	<i>Acropora formosa</i>	$0.55 \pm 0.13$ to $0.72 \pm 0.11$	Present study
Salmon Bay, Australia	<i>Acropora yongei</i>	$0.43 \pm 0.04$	Ross et al (2015)
Virgin Island, USA	<i>Acropora cervicornis</i>	$0.59 \pm 0.05$	Gladfelter et al (1978)
Phuket, Thailand	<i>Acropora prolifera</i>	$0.68 \pm 0.03$	Charuchinda & Hylleberg (1984)
	<i>Acropora formosa</i>	$0.51 \pm 0.15$	
Western Australia	<i>Acropora formosa</i>	$0.44 \pm 0.16$ to $0.66 \pm 0.13$	Harriot (1998)
Sulawesi, Indonesia	<i>Acropora valenciennesi</i>	$0.55 \pm 0.13$ to $1.00 \pm 0.17$	Crabbe & Smith (2002)
Okinawa, Japan	<i>Acropora formosa</i>	$0.39 \pm 0.13$ to $0.69 \pm 0.20$	Okubo et al (2005)
Florida, USA	<i>Acropora cervicornis</i>	$0.63 \pm 0.29$	Lirman et al (2010)



Results from this study suggest that *A. formosa* in Renggis reef were not growing at their full potential. Since there was no significant drop survivals at Renggis reef, they could possibly be suffering from chronic or long term stress that suppressed their growth performance. Considering that Tioman Island is visited by almost 200,000 tourists annually (CCC 2005), the tourism pressure might have affected the health of Tioman's reefs. This could be an alarming message to the local authority to take necessary actions in the marine protected area of Tioman Island (Abelson 2006; RCM 2008; Rinkevich 2008).

The capacity of *A. formosa* to generate proto-branches showed almost similar pattern of variations as the extension growths. The generation and fast growth of proto-branches are essential for *Acropora* to form a branching reef. The three dimensional structure of the branching corals benefited the ecosystem by reducing wave actions and buffering the hydrodynamic impacts, thus preventing erosion (Madin & Connolly 2006). The geometry of branching *Acropora* colonies is capable of protecting the colony itself against excessive light in shallow waters by modulating light levels on the reef (Kaniewska et al 2008). In addition the complex reef structure also brings advantage for other reef inhabitants by providing shade and various types of micro-habitats. A high rate of proto-branch generation would also indicate high asexual reproduction through coral fragmentation, which is crucial for colony expansion (Lirman 2000) and for regeneration after storm destruction (Garrison & Ward 2008). Fragments of these broken proto-branches could then be beneficially utilized for coral transplantation (Soong & Chen 2003; Garrison & Ward 2008).

Results from this study may suggest that growth trend of *A. formosa* was possibly related to the annual monsoon seasons in Malaysia. *A. formosa* in Tioman Island recorded faster growth during March-April and October-November periods, where both were inter-monsoon seasons. During this period higher seawater temperature was recorded (Figures 2 and 3) and perhaps might have some influence on the coral growth. Results also showed decreased growth from May to September 2012 (Figure 3), which was within the Southwest monsoon period. The growth rates were increased again during the Northeast monsoon, from November 2012 to February 2013. Seasonal variations in extension growth and calcification of *A. formosa* have also been reported in other studies in Australia (Crossland 1981, 1984; Ross et al 2015), which also correlated with seawater temperatures. Thus it is important that coral transplant be conducted at times with optimum potential for their growth.

Although the transplanted coral recorded remarkable extension growth rate at  $1.44 \pm 0.68$  cm mth<sup>-1</sup> and demonstrated good growth potential, the survival rates at the end of experiment were significantly low. In addition, previous studies also recorded low survival rates of transplanted *Acropora* corals, with results showing that less than half of transplants managed to survived (Yap et al 1992; Okubo et al 2005). The higher mortalities recorded at the nursery site during this study were mainly due to predation by fish and other corallivores. Corallivorous fish such as the parrotfish (Scaridae) and butterflyfishes (Chaetodontidae) were commonly observed during the field survey. Previous studies have indicated that predation can limit the growth rate, competitive ability, and distribution of corals (Cox 1986; Pratchett 2005; Cole et al 2008; Francini-Filho et al 2008; Jayewardene et al 2009). The raised platform used in the present experiment has successfully deterred the creepy and crawling obligate coral predators such as the crown-of-thorns. However the setup cannot deter the highly mobile corallivorous fish, which should be considered in future coral transplant experiments.

**Conclusions.** This study has successfully documented the baseline data for *A. formosa* growth and its application in coral nurseries. *A. formosa* has excellent proto-branch regeneration and fast growth rates, thus can be suggested as a reef health indicator around Malaysia. The coral nursery work reported in this study was the first in Malaysia, which was managed by Reef Check Malaysia. With the current trend of increasing pressures on reef ecosystems, coral transplant is indeed an excellent method for active reef conservation and restoration. Nevertheless, continuous long term, systematic

monitoring are needed in order to have greater understanding of the *A. formosa* growth and dynamics in the tropical coral reef ecosystems.

**Acknowledgements.** We are grateful for the close collaboration between National University of Malaysia (UKM) and Reef Check Malaysia (RCM) in completing this study. We thank the staff members of RCM: Chelliah, Chen and Tam for their participation and assistance during the field trips. Special thanks to the Tioman Island Marine Park Department and the local dive centers for providing facilities and supports. This study was partly funded by RCM and corresponding author's research grant UKM-ST-06-FRGS0246-2010.

## References

- Abelson A., 2006 Artificial reefs vs coral transplantation as restoration tools for mitigating coral reef deterioration: benefits, concerns, and proposed guidelines. *Bulletin of Marine Science* 78:151-159.
- Ammar M. S. A., El-Gammal F., Nassar M., Belal A., Farag W., El-Mesiry G., El-Haddad K., Orabi A., Abdelreheem A., Shaaban A., 2013 Review: current trends in coral transplantation – an approach to preserve biodiversity. *Biodiversitas* 14(1):43-53.
- Ateweberhan M., Feary D. A., Keshavmurthy S., Chen A., Schleyer M. H., Sheppard C. R., 2013 Climate change impacts on coral reefs: synergies with local effects, possibilities for acclimation, and management implications. *Marine Pollution Bulletin* 74(2):526-539.
- Baker A. C., Glynn P. W., Riegl B., 2008 Climate change and coral reef bleaching: an ecological assessment of long-term impacts, recovery trends and future outlook. *Estuarine, Coastal and Shelf Science* 80:435-471.
- Burke L., Reyttar K., Spalding M., Perry A., 2011 Reefs at risk revisited. World Resources Institute, Washington DC, 114 pp.
- Caras T., Pasternak Z., 2009 Long-term environmental impact of coral mining at the Wakatobi marine park, Indonesia. *Ocean and Coastal Management* 52:539–544.
- CCC (Coral Cay Conservation), 2005 Malaysia tropical forest conservation project report of the Perhentian phase. Project report, Coral Cay Conservation, United Kingdom, 111 pp.
- Chabanet P., Adjeroud M., Andrefouët S., Bozec Y. M., Ferraris J., Garcia-Charton J., Shrimm M., 2005 Human-induced physical disturbances and their indicators on coral reef habitats: a hierarchical approach. *Aquatic Living Resources* 18:215–230.
- Charuchinda M., Hylleberg J., 1984 Skeletal extension of *Acropora formosa* at a fringing reef in the Andaman Sea. *Coral Reefs* 3:215-219.
- Chou L. M., Yeemin T., Abdul Rahim B. G. Y., Vo S. T., Alino P., Suharsono, 2009 Coral reef restoration in the South China Sea. *Galaxea Journal of Coral Reef Studies* 11:67-74.
- Cole A. J., Pratchett M. S., Jones G. P., 2008 Diversity and functional importance of coral-feeding fishes on tropical coral reefs. *Fish and Fisheries* 9:286-307.
- Cox E. F., 1986 The effects of a selective corallivore on growth rates and competition for space between two species of Hawaiian corals. *Journal of Experimental Marine Biology and Ecology* 101:161-174.
- Crabbe M. J. C., Smith D. J., 2002 Comparison of two reef sites in the Wakatobi Marine National Park (SE Sulawesi, Indonesia) using digital image analysis. *Coral Reefs* 21:242-244.
- Crossland C. J., 1981 Seasonal growth of *Acropora* cf. *formosa* and *Pocillopora damicornis* on a high latitude reef (Houtman Abrolhos, Western Australia). *Proceeding IVth International Coral Reef Symposium, Manila, Vol. I, pp. 663-667.*
- Crossland C. J., 1984 Seasonal variations in the rates of calcification and productivity in the coral *Acropora formosa* on a high-latitude reef. *Marine Ecology Progress Series* 15:135-140.

- Fabricius K., De'ath G., McCook L., Turak E., Williams D. M., 2005 Changes in algal, coral and fish assemblages along water quality gradients on the inshore Great Barrier Reef. *Marine Pollution Bulletin* 51:384-398.
- Feary D. A., Burt J. A., Cavalcante G. H., Bauman A. G., 2012 Extreme physical factors and the structure of Gulf fish and reef communities. In: *Coral reefs of the Gulf: adaptation to climatic extremes*. Riegl B. M., Purkis S. J. (eds), Springer, pp. 163-170.
- Forrester G. E., O'Connell-Rodwell C., Baily P., Forrester L. M., Giovannini S., Harmon L., Karis R., Krumholz J., Rodwell T., Jarecki L., 2011 Evaluating methods for transplanting endangered Elkhorn corals in the Virgin Islands. *Restoration Ecology* 19:299-306.
- Fox H. E., Mous P. J., Pet J. S., Muljadi A. H., Caldwell R. L., 2005 Experimental assessment of coral reef rehabilitation following blast fishing. *Conservation Biology* 19:98-107.
- Francini-Filho R. B., Moura R. L., Ferreira C. M., Coni E. O. C., 2008 Live coral predation by parrotfishes (Perciformes: Scaridae) in the Abrolhos Bank, eastern Brazil, with comments on the classification of species into functional groups. *Neotropical Ichthyology* 6(2):191-200.
- Garrison V., Ward G., 2008 Storm-generated coral fragments - a viable source of transplants for reef rehabilitation. *Biological Conservation* 141:3089-3100.
- Gladfelter E. H., Monahan R. K., Gladfelter W. B., 1978 Growth rates of five reef-building corals in the Northeastern Caribbean. *Bulletin of Marine Science* 28:728-734.
- Harriott V. J., 1998 Growth of the staghorn coral *Acropora formosa* at Houtman Abrolhos, Western Australia. *Marine Biology* 132:319-325.
- Hoegh-Guldberg O., Mumby P. J., Hooten A. J., Steneck R. S., Greenfield P., Gomez E., Harvell C. D., Sale P. F., Edwards A. J., Caldeira K., Knowlton N., Eakin C. M., Iglesias-Prieto R., Muthiga N., Bradbury R. H., Dubi A., Hatziolos M. E., 2007 Coral reefs under rapid climate change and ocean acidification. *Science* 318:1737-1742.
- Hubbard D. K., 1997 Reefs as dynamic systems. In: *Life and death of coral reefs*. Birkeland C. (ed), International Thomson Publishing, New York, pp. 43-67.
- Hughes T. P., Rodrigues M. J., Bellwood D. R., Ceccarelli D., Hoegh-Guldberg O., McCook L., Moltschanivskyj N., Pratchett M. S., Steneck R. S., Willis B., 2007 Phase shift, herbivory, and the resilience of coral reefs to climate change. *Current Biology* 17:360-365.
- Jackson J. B. C., Kirby M. X., Berger W. H., Bjorndal K. A., Botsford L. W., Bourque B. J., Bradbury R. H., Cooke R., Erlandson J., Estes J. A., Hughes T. P., Kidwell S., Lange C. B., Lenihan H. S., Pandolfi J. M., Peterson C. H., Steneck R. S., Tegner M. J., Warner R. R., 2001 Historical overfishing and the recent collapse of coastal ecosystems. *Science* 293:629-637.
- Jayewardene D., Donahue M. J., Birkeland C., 2009 Effects of frequent fish predation on corals in Hawaii. *Coral Reefs* 28:499-506.
- Kaniewska P., Anthony K. R. N., Hoegh-Guldberg O., 2008 Variation in colony geometry modulates internal light levels in branching corals, *Acropora humilis* and *Stylophora pistillata*. *Marine Biology* 155:649-660.
- Lirman D., 2000 Fragmentation in the branching coral *Acropora palmata* (Lamarck): growth, survivorship, and reproduction of colonies and fragments. *Journal of Experimental Marine Biology and Ecology* 251:41-57.
- Lirman D., Thyberg T., Herlan J., Hill C., Young-Lahiff C., Schopmeyer S., Huntington B., Santos R., Drury C., 2010 Propagation of the threatened staghorn coral *Acropora cervicornis*: methods to minimize the impacts of fragment collection and maximize production. *Coral Reefs* 29:729-735.
- Madin J. S., Connolly S. R., 2006 Ecological consequences of major hydrodynamic disturbances on coral reefs. *Nature* 444:477-480.
- Munday P. L., Jones G. P., Pratchett M. S., Williams A. J., 2008 Climate change and the future for coral reef fishes. *Fish and Fisheries* 9:261-285.
- Okubo N., Taniguchi H., Motokawa T., 2005 Successful methods for transplanting fragments of *Acropora formosa* and *Acropora hyacinthus*. *Coral Reefs* 24:333-342.

- Osinga R., Schutter M., Griffioen B., Wijffels R. H., Verreth J. A. J., Shafir S., Henard S., Taruffi M., Gili C., Lavorano S., 2011 The biology and economics of coral growth. *Marine Biotechnology* 13:658-671.
- Pratchett M., 2005 Dietary overlap among coral-feeding butterflyfishes (Chaetodontidae) at Lizard Island, northern Great Barrier Reef. *Marine Biology* 148:373-382.
- RCM (Reef Check Malaysia), 2008 Coral reef monitoring report 2008. RCM, Kuala Lumpur, Malaysia, 29 pp.
- RCM (Reef Check Malaysia), 2012 A community based approach to coral reef rehabilitation in Tioman through coral transplanting: consolidated report. RCM, Kuala Lumpur, Malaysia, 60 pp.
- Riegl B. M., Purkis S., 2012 Coral reefs of the Gulf: adaptation to climatic extremes in the world's hottest sea. In: *Coral reefs of the Gulf: adaptation to climatic extremes*. Riegl B. M., Purkis S. J. (eds), Springer, pp. 1-4.
- Rinkevich B., 2005 Conservation of coral reefs through active restoration measures: recent approaches and last decade progress. *Environmental Science and Technology* 39:4333-4342.
- Rinkevich B., 2008 Management of coral reefs: we have gone wrong when neglecting active reef restoration. *Marine Pollution Bulletin* 56:1821-1824.
- Ross C. L., Falter J. L., Schoepf V., McCulloch M. T., 2015 Perennial growth of hermatypic corals at Rottneest Island, Western Australia (32°S). *PeerJ* 3:e781.
- Soong K., Chen T. A., 2003 Coral transplantation: regeneration and growth of *Acropora* fragments in a nursery. *Restoration Ecology* 11:62-71.
- Wolanski E., Richmond R. H., McCook L., 2004 A model of the effects of land-based, human activities on the health of coral reefs in the Great Barrier Reef and in Fouha Bay, Guam, Micronesia. *Journal of Marine Systems* 46:133-144.
- Wong P. P., 1993 Island tourism development in Peninsular Malaysia: environmental perspective. In: *Tourism vs environment: the case for coastal areas*. Wong P. P. (ed), Kluwer Academic Publishers, pp. 83-97.
- Wooldridge S. A., 2009 Water quality and coral bleaching thresholds: formalising the linkage for the inshore reefs of the Great Barrier Reef, Australia. *Marine Pollution Bulletin* 58:745-751.
- Yap H. T., Alino P. M., Gomez E. D., 1992 Trends in growth and mortality of three coral species (Anthozoa: Scleractinia), including effects of transplantation. *Marine Ecology Progress Series* 83:91-101.
- Yeemin T., Suthacheep M., Pettongma R., 2006 Coral reef restoration projects in Thailand. *Ocean and Coastal Management* 49:562-575.

Received: 23 August 2016. Accepted: 25 September 2016. Published online: 18 October 2016.

Authors:

Loke Hai Xin, School of Environmental and Natural Resource Sciences, Faculty of Science and Technology, National University of Malaysia, 43600 Bangi, Selangor, Malaysia, e-mail: lokehx@gmail.com

Kee Alfian Abdul Adzis, School of Environmental and Natural Resource Sciences, Faculty of Science and Technology, National University of Malaysia, 43600 Bangi, Selangor, Malaysia, e-mail: keealf@hotmail.com

Julian Hyde, Reef Check Malaysia, Suite 5.19-5.22, Box 606, Wisma Central, Jalan Ampang, 50450 Kuala Lumpur, Malaysia, e-mail: julian@reefcheck.org.my

Zaidi Che Cob, School of Environmental and Natural Resource Sciences, Faculty of Science and Technology, National University of Malaysia, 43600 Bangi, Selangor, Malaysia, e-mail: zdcc@ukm.edu.my

This is an open-access article distributed under the terms of the Creative Commons Attribution License, which permits unrestricted use, distribution and reproduction in any medium, provided the original author and source are credited.

How to cite this article:

Xin L. H., Adzis K. A. A., Hyde J., Cob Z. C., 2016 Growth performance of *Acropora formosa* in natural reefs and coral nurseries for reef restoration. *AACL Bioflux* 9(5):1090-1100.